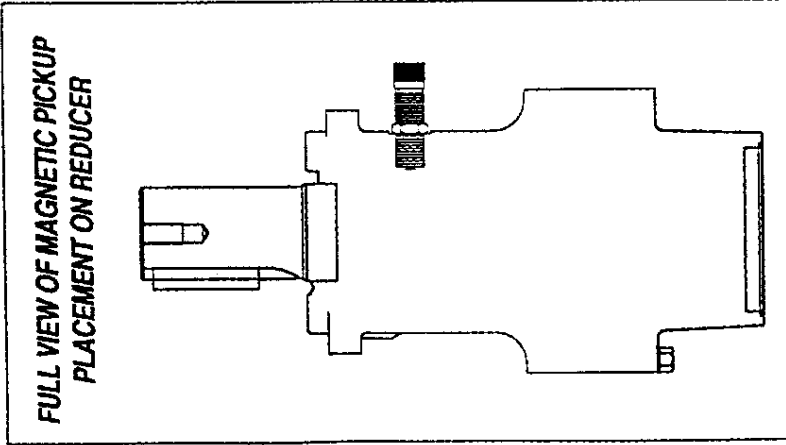
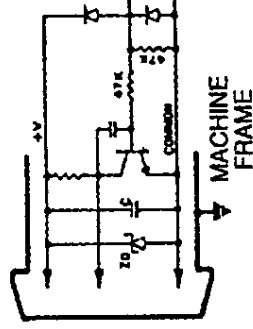


INSTALLATION DIAGRAMS

For HECO Electronics



DT-6 COUNTER



POWER SUPPLY*
12V DC
15MA (minimum)

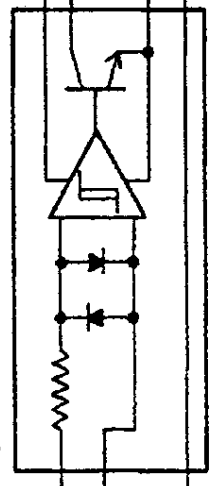
2-WIRE, SHIELDED, INPUT
CABLE, 10' LONG



BLACK
WHITE

**SHIELD OPEN
ON THIS END**

3-WIRE, SHIELDED, OUTPUT
CABLE, 10' LONG



+12 V DC AT 15 MA
OUTPUT:
40MA MAX.
+28V MAX. AT 0MA
COMMON

**SHIELD — CONNECT
TO COMMON AT INPUT
OF TACH. OR COUNTER**

NOTE: Both magnetic pickup leads must be floating. Do not ground or connect to shield.

***NOTE: POWER SUPPLY TO BE PROVIDED BY CUSTOMER.**